

TECHNICAL NOTE 03-02
WATER RESTRAINT SYSTEM
Power Control Panel
Auxiliary Relay Contacts
Friday, January 18, 2002

Introduction

This technical note describes auxiliary relay contacts that are provided on Relay 1 and Relay 2 of the Power Control Panel.

Relay R1 is associated with the WRS water-pump motor. This relay has four sets of normally open contacts. One set applies power to a magnetic motor starter that energizes the WRS water-pump motor. The other three sets of contacts are available for auxiliary uses.

Relay R2 is associated with the WRS air compressor. This relay has four sets of normally open contacts. Two sets of contacts are used to activate the WRS air compressor. The other two sets are available for auxiliary uses.

Both relays are located within the WRS Power Control Panel. Photos 1 and 2 below show the location and existing wiring of the two relays.

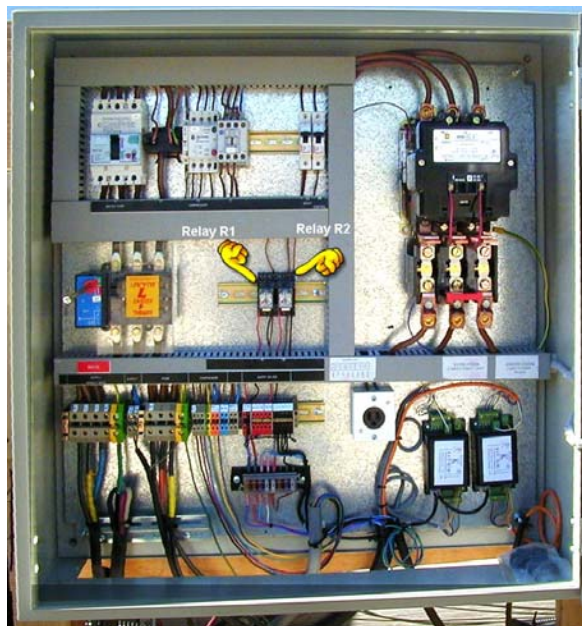


Photo 1. Location of R1 and R2

Technical Information

R1 Contact Pairs	Usage
5 -9	Available
6-10	WRS
7-11	Available
8-12	Available

Table 1. Contact Usage for Relay 1

R2 Contact Pairs	Usage
5 -9	WRS
6-10	WRS
7-11	Available
8-12	Available

Table 2. Contact Usage for Relay 2

NOTE: See Photo 2 below for arrangement of relay contacts.

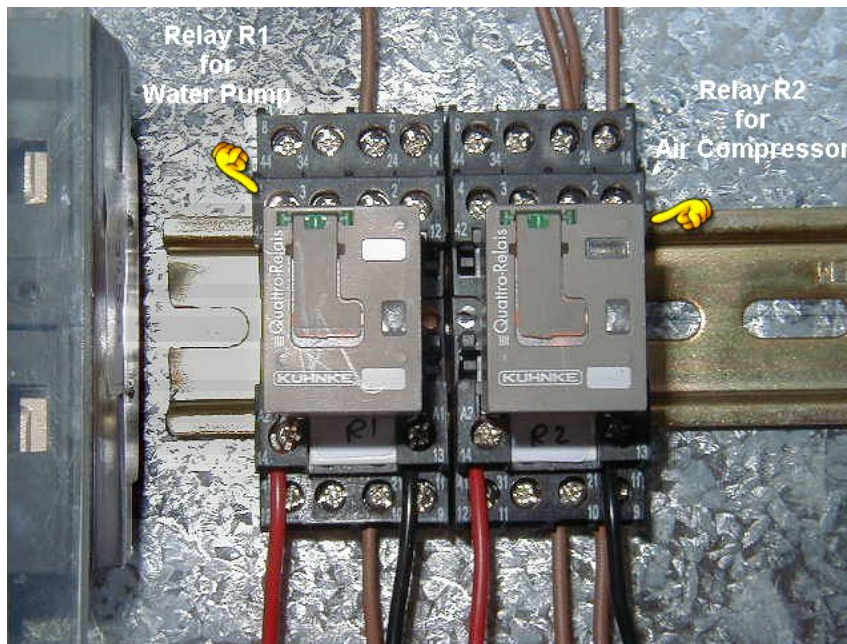


Photo 2. Relay Contact Arrangement

Logistic Support

For replacement parts and further technical assistance call the Hydro-Force office on (619) 478-2600 voice or (619) 478-2555 facsimile.